

*The Wild Side of Vintage*  
**CAFE RACERS**

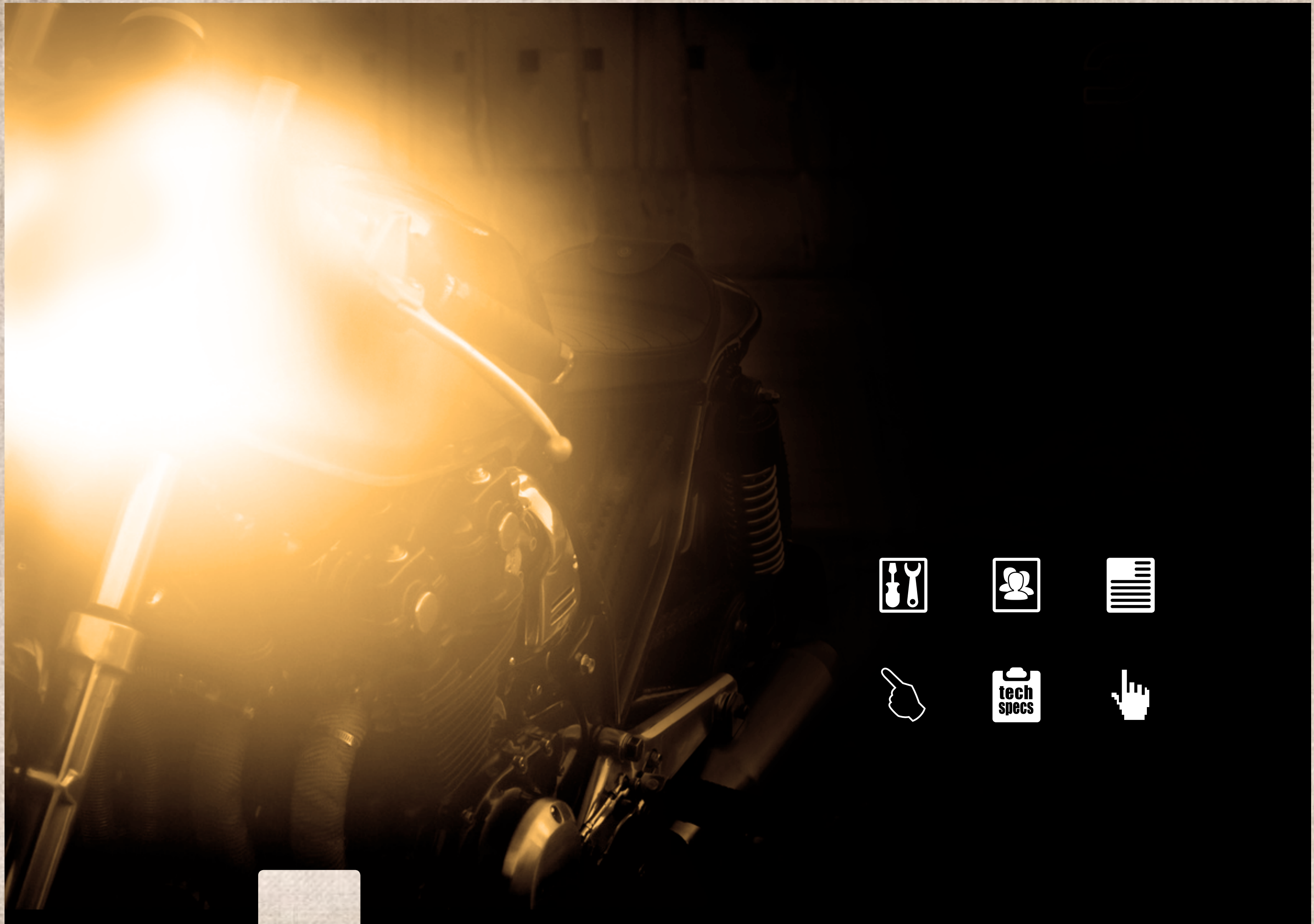
English & Spanish Edition



***SC Rumble***  
***Vibrazioni Art Design***

- ♠ ***The Interstellar***
- ♠ ***The Ugly Duck***
- ♠ ***Nomade Tiger***
- ♠ ***Gentleman Jim***
- ♠ ***BMW R100HK***







*The Wild Side of Vintage*  
**CAFE RACERS**





# CAFE RACERS

## STAFF

### Publisher

Daniel Gil-Delgado

### Design

Samuel Gómez

### Translations

Álvaro Cabeza de Vaca

### Community

P. Jara

### Regular Contributors (Spain)

Chus Catalán, Javier Huertas, Jose Hernandez,  
Outsider, Old School Racer, Pilar Gárgoles,  
Raul Ranz

### Regular Contributors (International)

Mike Dirksaw (USA)  
Maurice Van Den Tillaard, Floris Velthuis  
(Netherlands), Oscar Romagnolli (Argentina),  
Dirk Behlau, Horst Rösler (Germany)  
Paulo Santos (Portugal)  
Marco Frino (Italy)

### Production

Xtreme Bikes Media, S.L.  
caferacers@caferacersmag.es

### Advertising

marketing@caferacersmag.es



It's prohibited the total or partial reproduction of pictures, texts and illustrations without the corresponding written authorization of the publisher. Likewise, Xtreme Bikes is not responsible neither for the opinions expressed by its contributors, or for the veracity of the products presented by its advertisers



Síguenos en:



**LAS LEYENDAS  
ESTÁN RESERVADAS  
A UNOS POCOS**



**FOR THE RIDE**



*Bonneville*  
T214

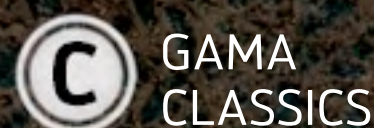


Siente cada día el carácter legendario y el espíritu incansable de los años dorados de la velocidad.

La Bonneville T214 es un tributo al épico récord de velocidad de 214,4 mph (345,06 km/h) que logró Johnny Allen en 1956 sobre las salinas del desierto de Bonneville a los mandos del "Texas Ceegar" impulsado por motores Triumph.

Una pieza de edición limitada a 1.000 unidades para todo el mundo con el inconfundible motor bicilíndrico en paralelo de 865cc. de Triumph y un perfecto equilibrio entre seguridad y agilidad para tu día a día. No te quedes sin ella.

**4** DE GARANTÍA  
SIN LÍMITE DE  
KILOMETRAJE  
**AÑOS\***  
INCLUIDOS DE SERIE



**triumphmotorcycles.es**



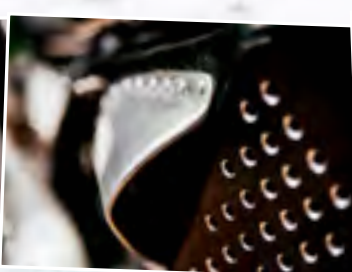
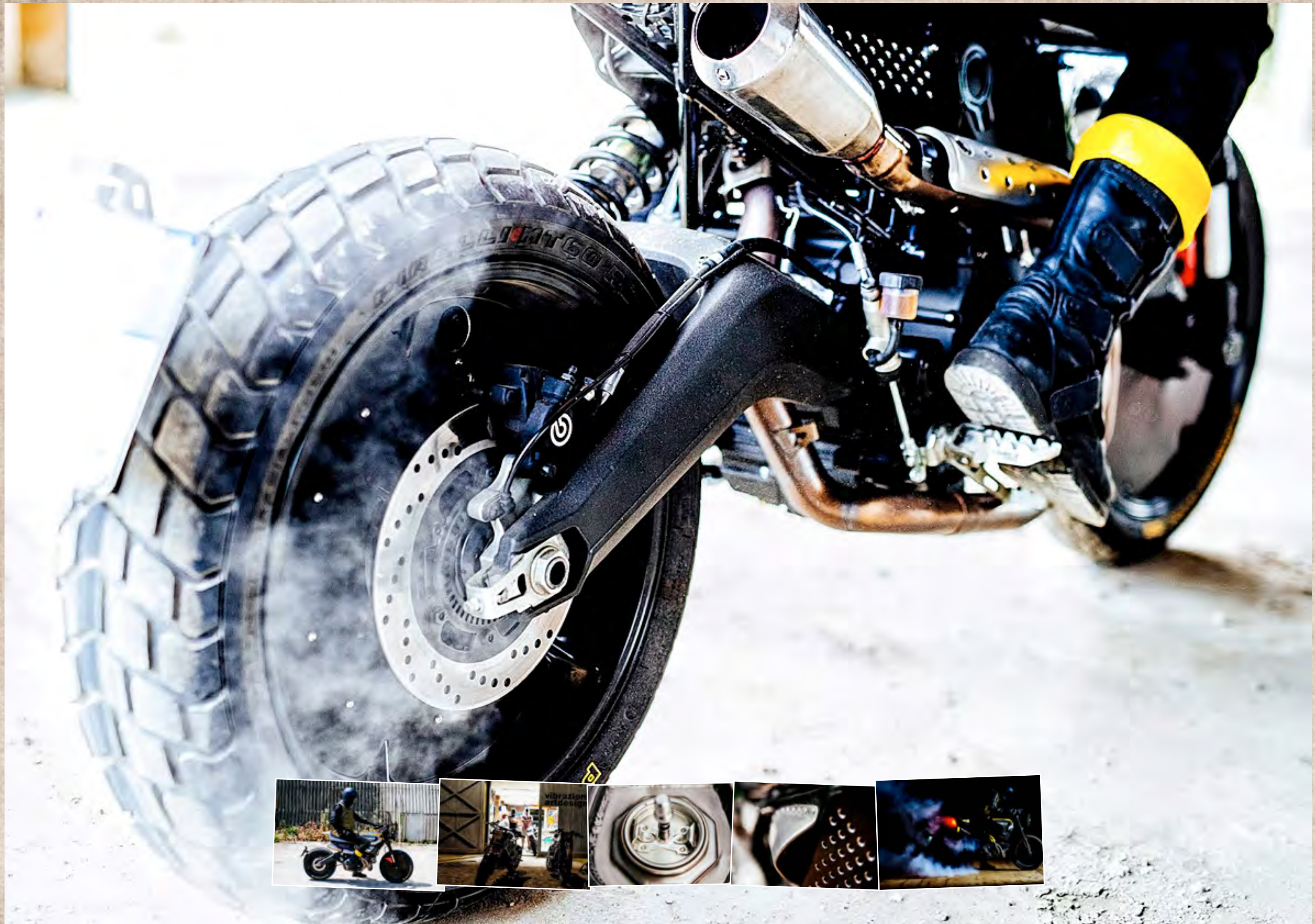
# SC Rumble





























# The Interstellar







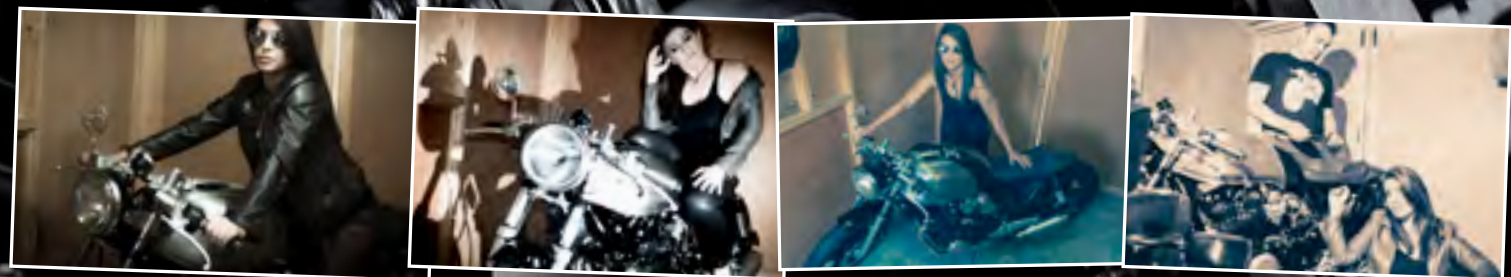






















# The Ugly Duck







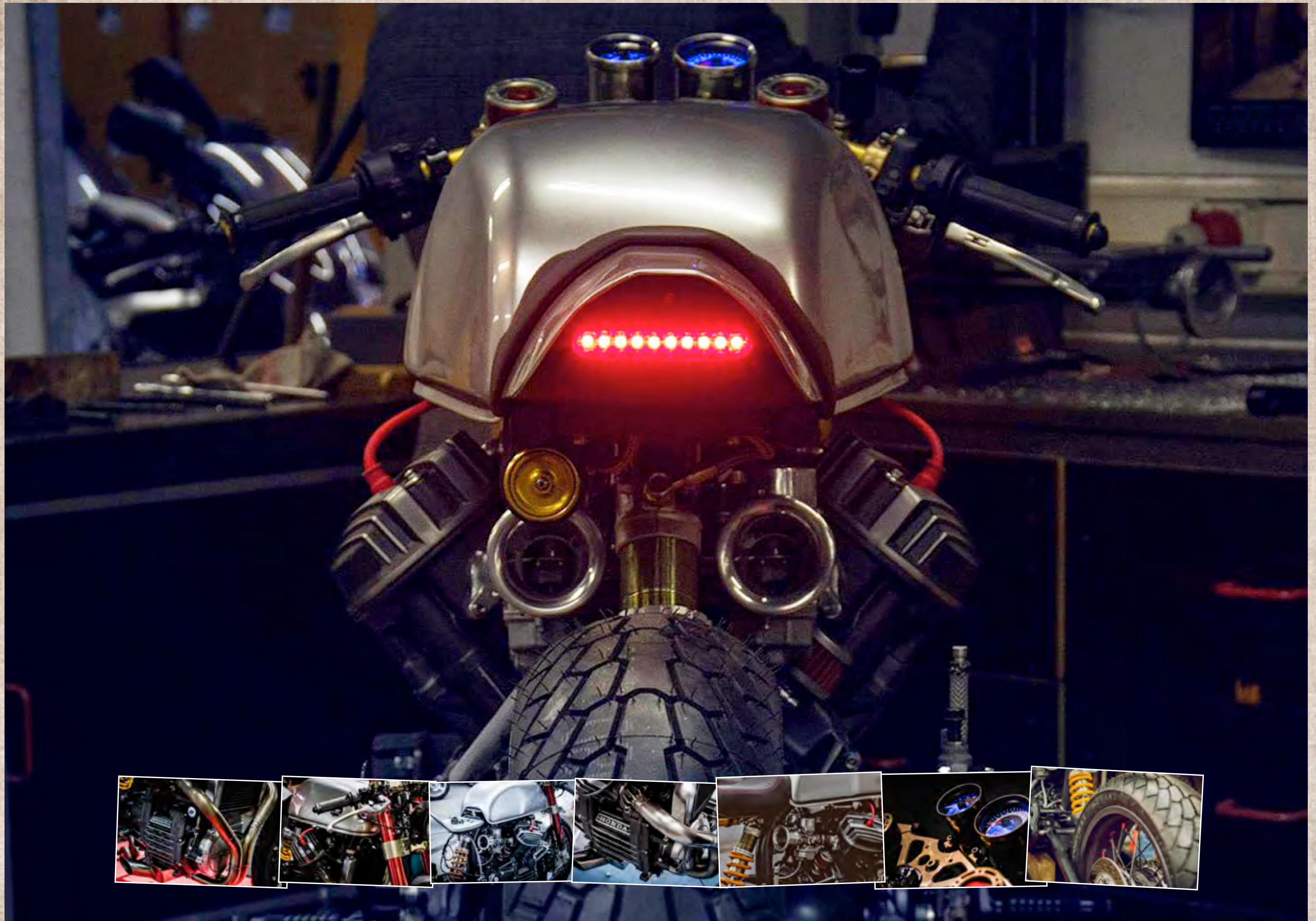






















# Nomade Tiger





























# Gentleman Jim











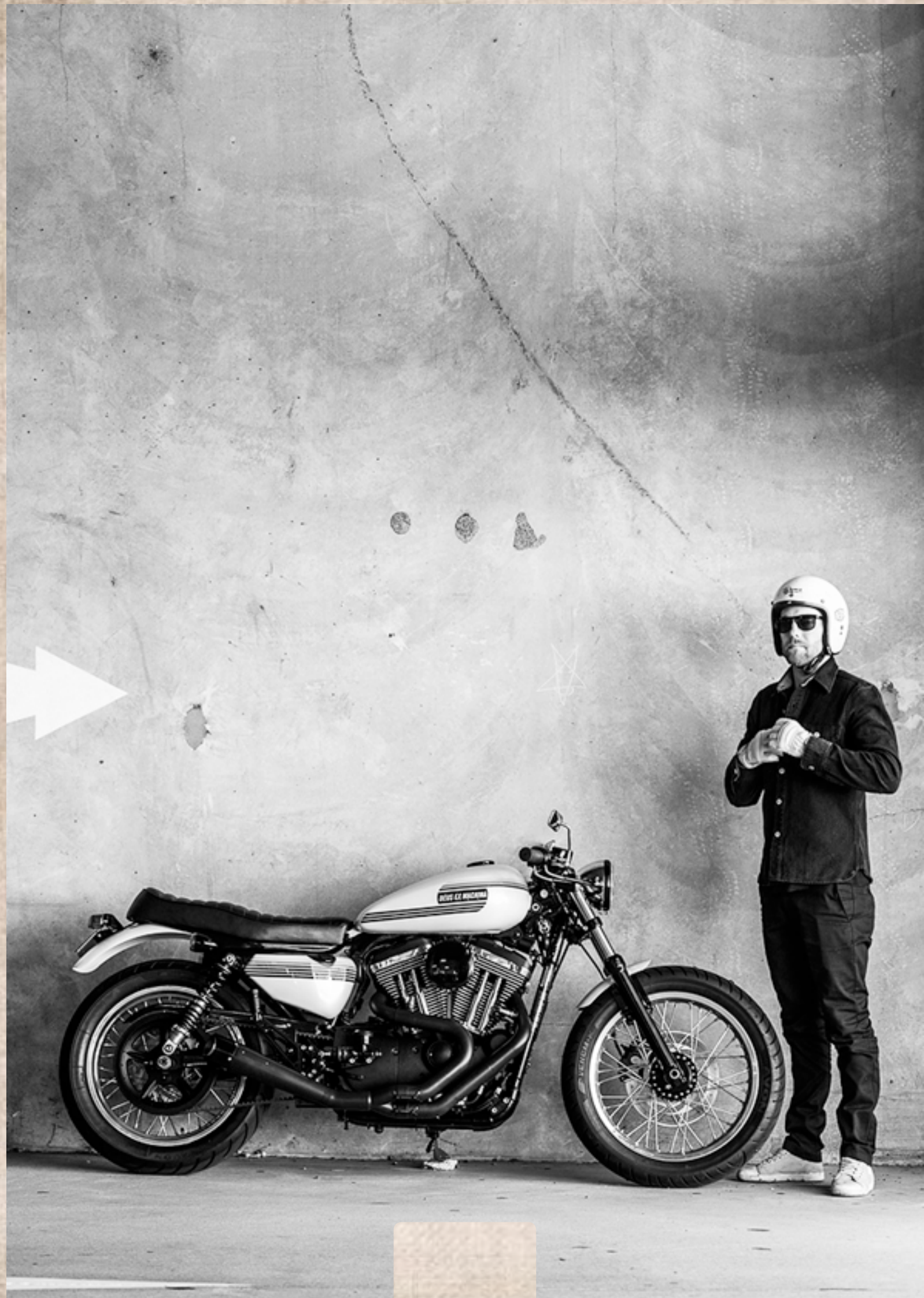














# BMW R100HK





















Garage Lifestyle & Good Vibrations Magazine

# XTREME BIKES

English & Spanish Editions



## Playa del Rey

Matt Black Custom Designs

- ★ **Ignite Straight Six**
  - Ken's Factory Special **Ken's Factory**
  - Juggernaut Hot-Dock Custom Cycles
- ★ **As de Picas Lucky Custom**
- ★ **The Rising JT Bros**
- ★ **Gentleman Jim Deus ex Machina**

# #18